



US Army Corps of Engineers  
BUILDING STRONG®

# Tropical Storm Ida Advisory #2

For Planning Purposes Only!

WASHINGTON, DC  
18:56:44  
26 Aug 2021

CHICAGO  
17:56:44  
26 Aug 2021

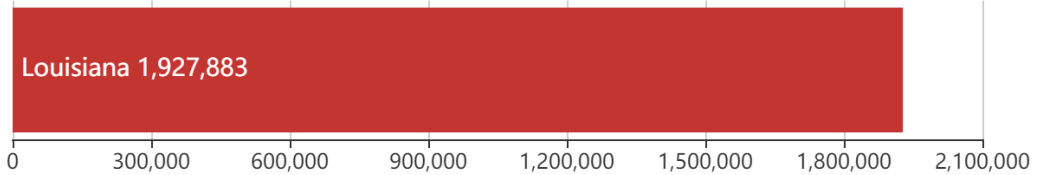
LOS ANGELES  
15:56:44  
26 Aug 2021

<https://go.usa.gov/xFz8H>

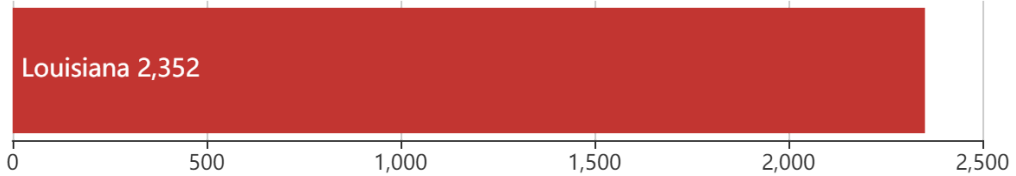
Updated as of 26 Aug 2021 (5:56 PM Central Daylight Time)

## Debris

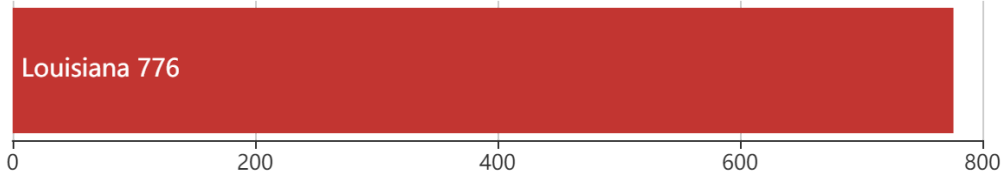
1.9M  
cu. yd.



Est. Temp. Roofing  
2.4K  
units

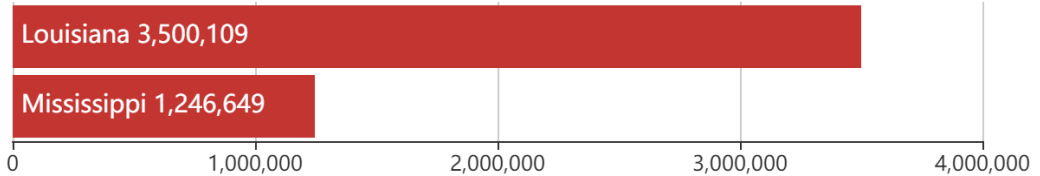


Act. Temp. Roofing  
776  
units



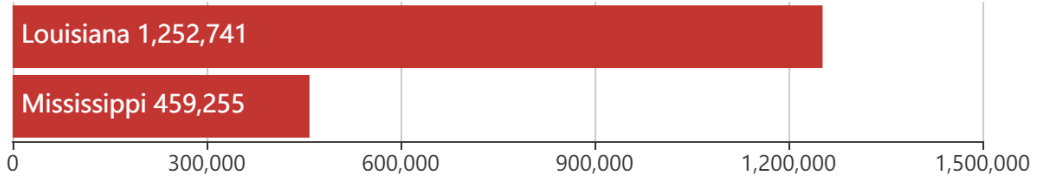
## Population

4.7M  
people



## Households

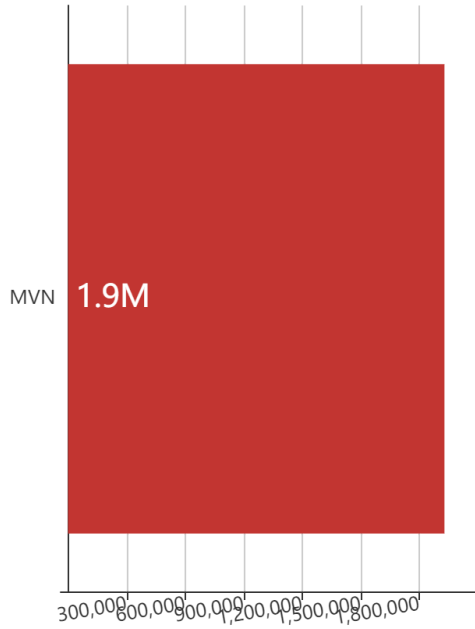
1.7M  
households



## Mission Model Summary

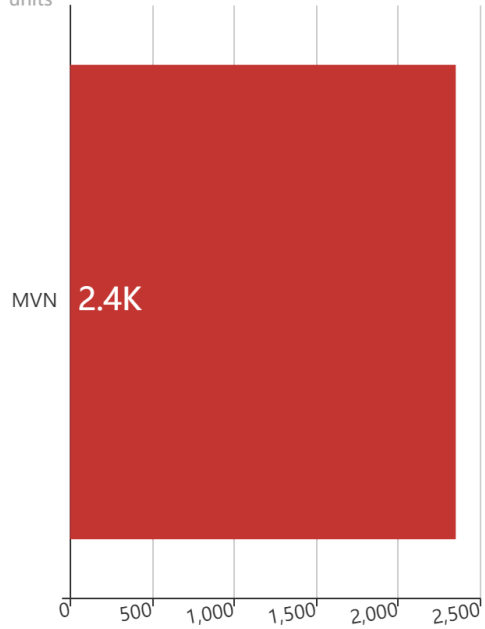
### Debris By USACE District

cu. yd.

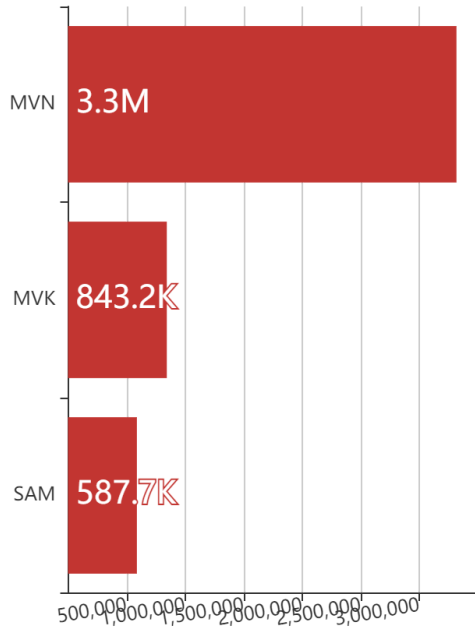


### Est. Temp. Roofing By USACE District

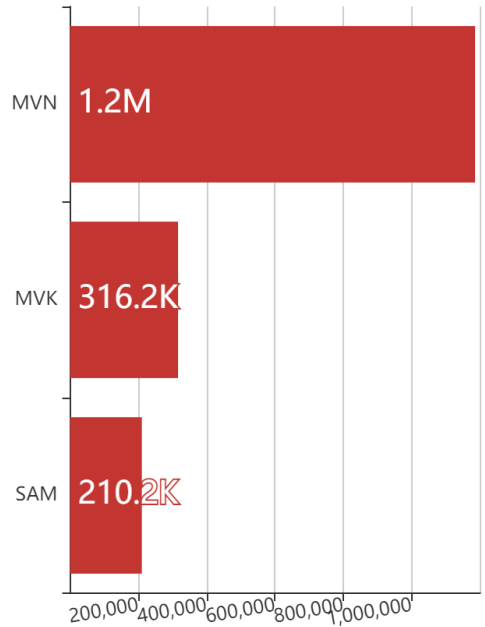
units



### Population By USACE District



### Households By USACE District



## Critical Infrastructure Summary

### Total

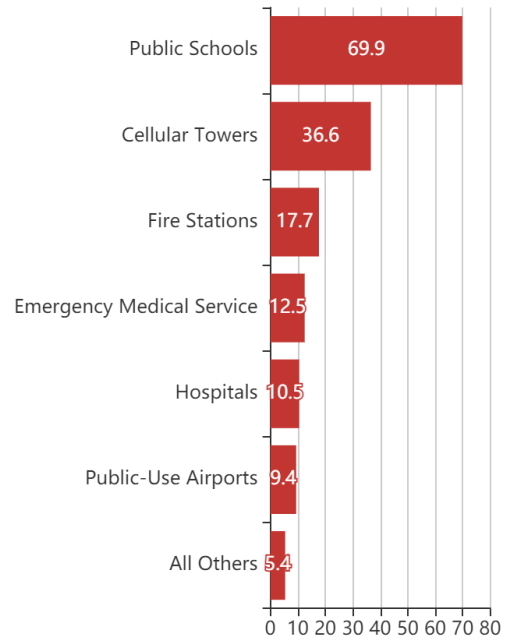


### Power Requirements



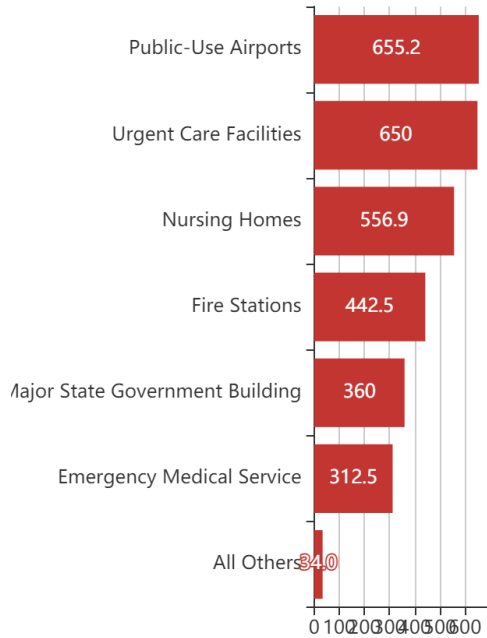
### Generators

By Generator Count



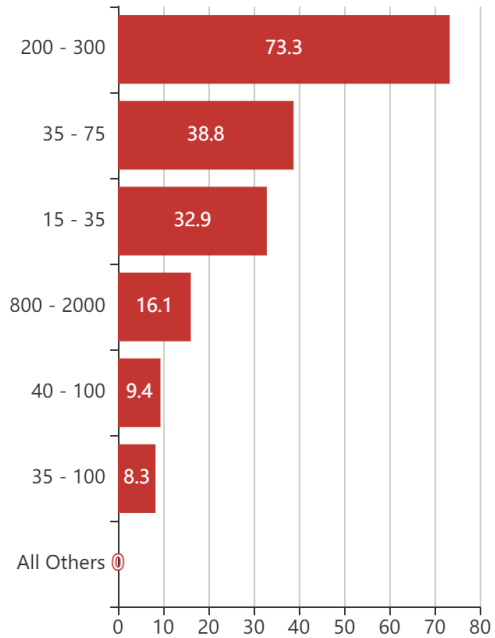
### Generators

By Power Requirement



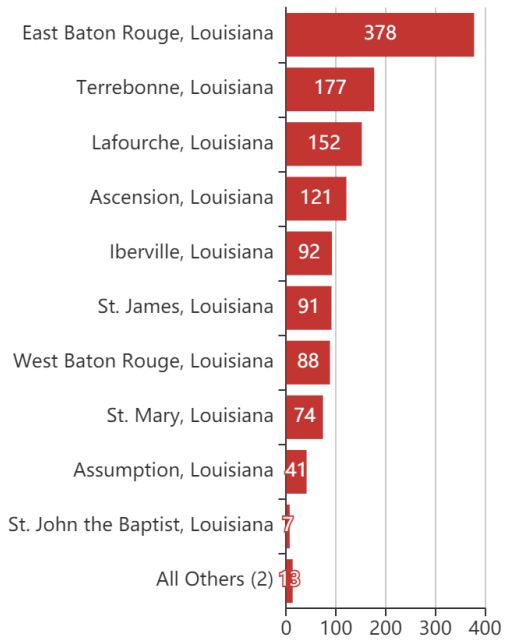
### Generators

By Range



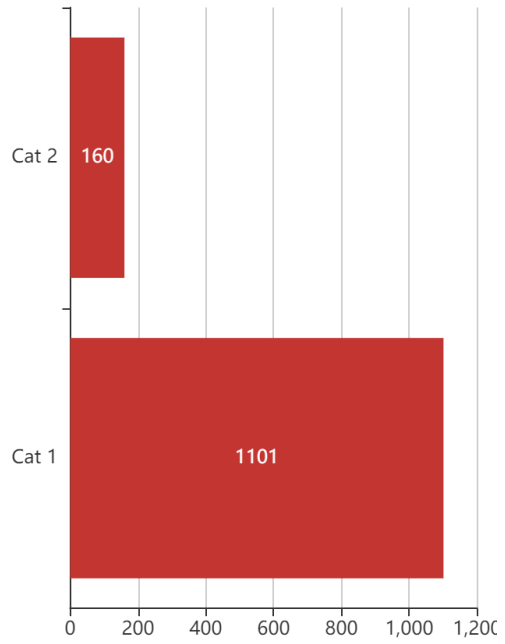
### Structures

By County



### Structures

By Intensity



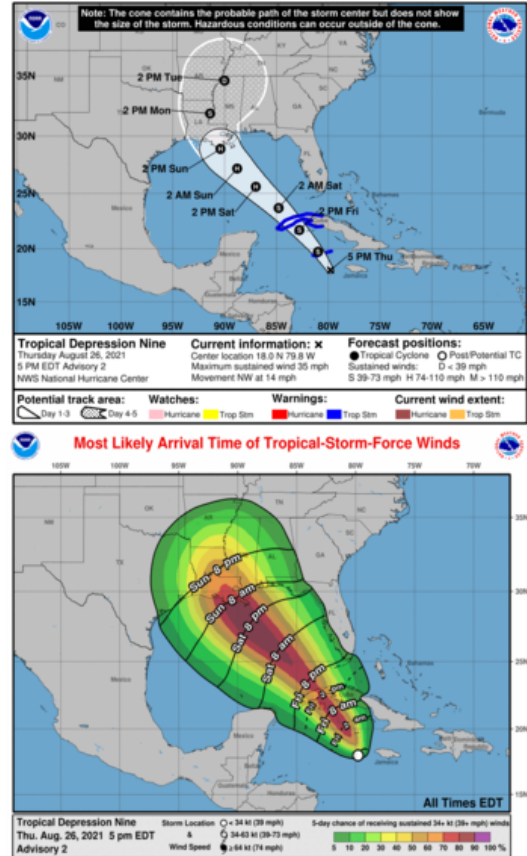


# Key Messages for Tropical Depression Nine

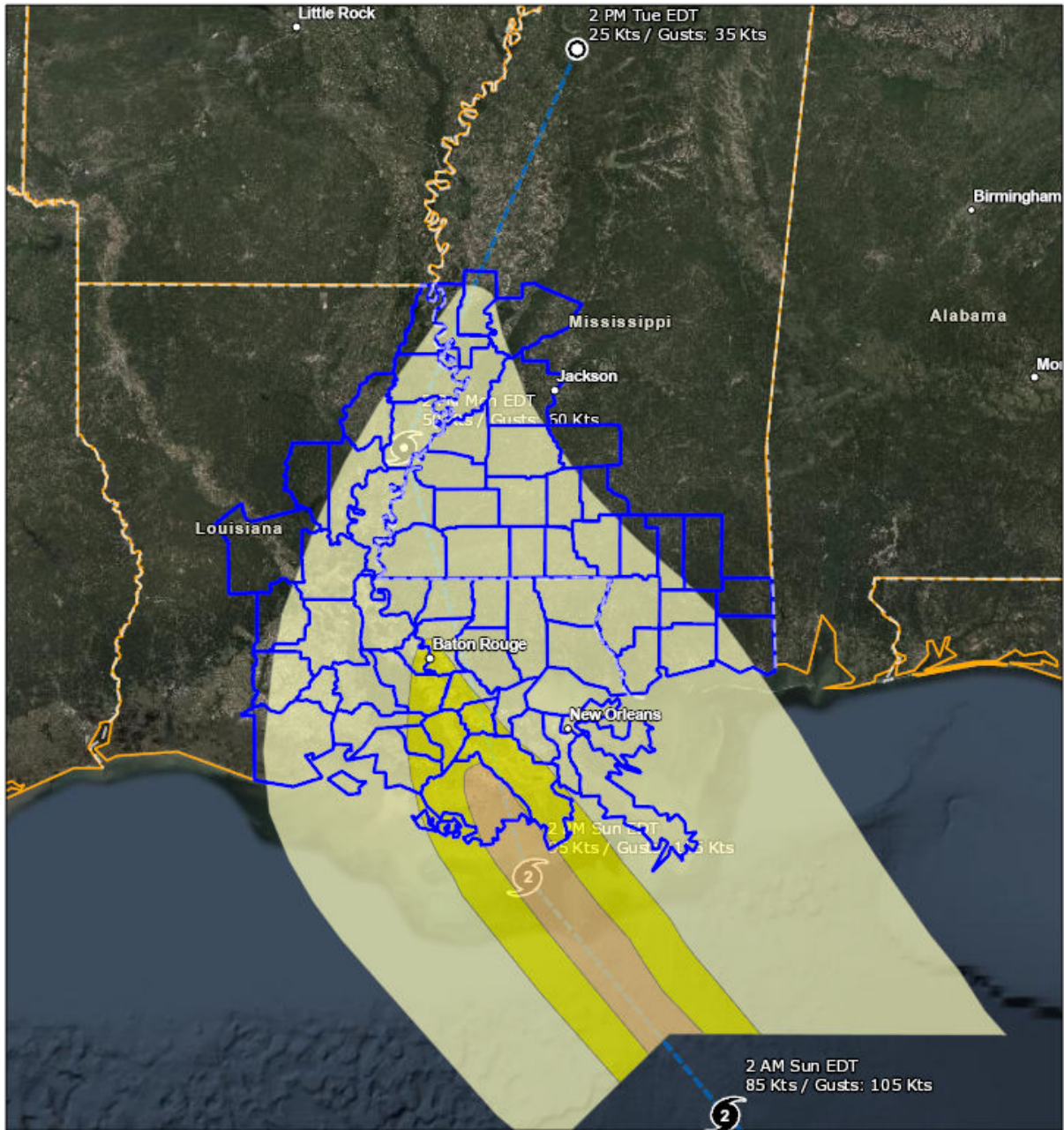


Advisory 2: 5:00 PM EDT Thu Aug 26, 2021

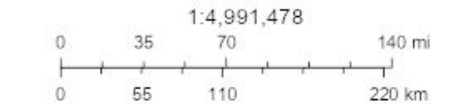
1. Tropical storm conditions are expected in portions of the Cayman Islands tonight and in portions of western Cuba and the Isle of Youth Friday. Dangerous storm surge is possible Friday in portions of western Cuba, including the Isle of Youth, in areas of onshore flow.
2. Life-threatening heavy rains, flash flooding and mudslides are expected across Jamaica, the Cayman Islands, and western Cuba, including the Isle of Youth.
3. The system is forecast to approach the northern Gulf coast at or near major hurricane intensity on Sunday, where there is an increasing risk of life-threatening storm surge, damaging hurricane-force winds, and heavy rainfall Sunday and Monday, especially along the coast of Louisiana. Storm Surge and Hurricane watches will likely be issued for a portion of this area later tonight or Friday morning. Interests in these areas should closely monitor the progress of this system and follow any advice given by local officials.



For more information go to [hurricanes.gov](https://hurricanes.gov)



- Counties
- State Boundaries
- Mission Model Swaths
  - TS
  - Cat 1
  - Cat 2
- Tropical Cyclone Observed Surface Wind Swath
  - Observed (Best Track) Winds  $\geq$  34 knots (39 mph)
  - Observed (Best Track) Winds  $\geq$  50 knots (58 mph)
  - Observed (Best Track) Winds  $\geq$  64 knots (74 mph)
- Observed (Best Track) Track Line
- Observed (Best Track) Center Position

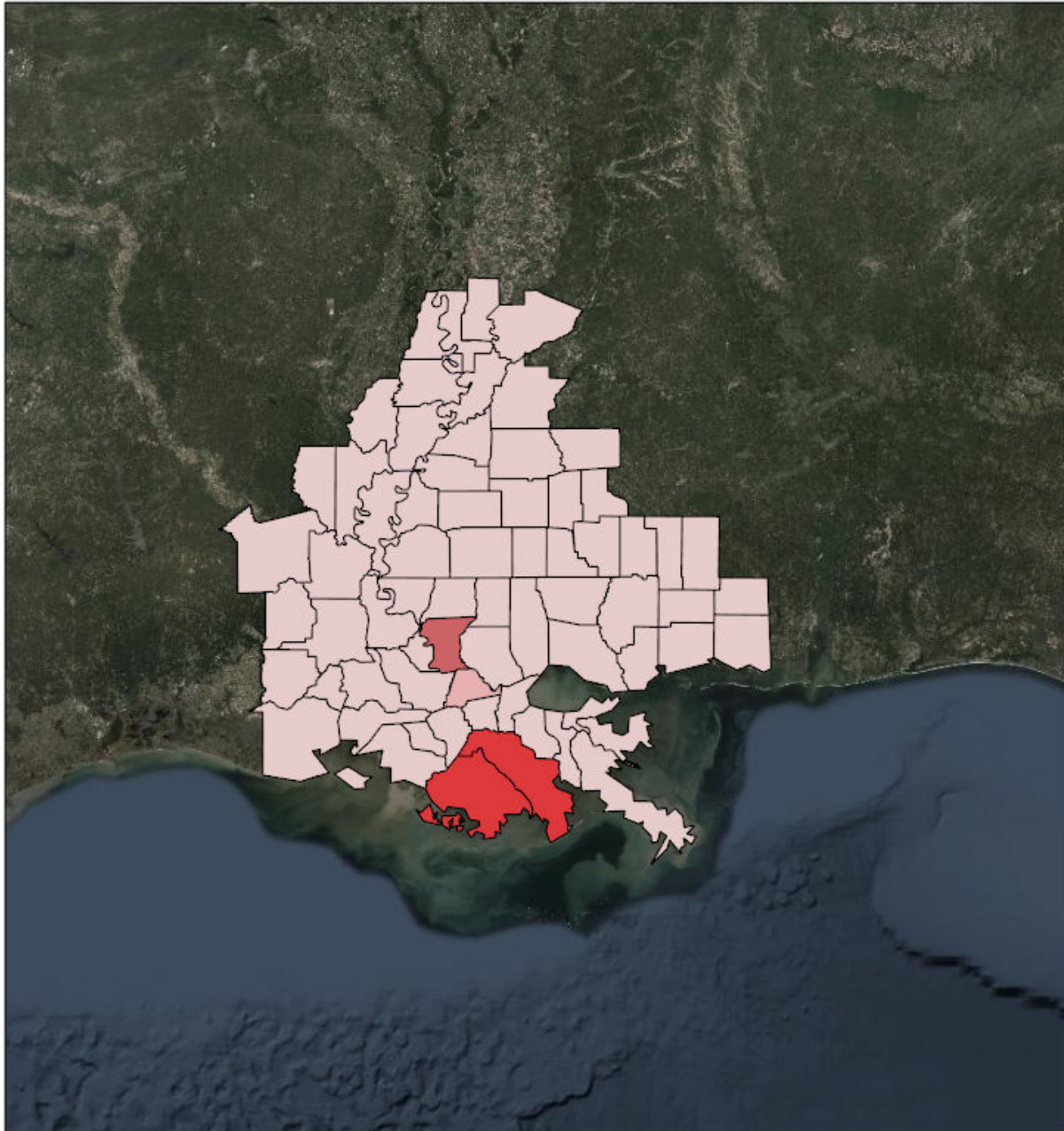


Source: NOAA, Esri, NOAA/NOS/OCS nowCOAST, NOAA/NWS/NHC, NOAA/NWS/CPHC, Esri, HERE, Garmin, FAO, NOAA, USGS, EPA, Source: Esri, DigitalGlobe, GeoEye, Earthstar Geographics, CNES/Airbus DS, USDA, USGS, AeroGRID, IGN, and the GIS User Community




Created by SimSuite

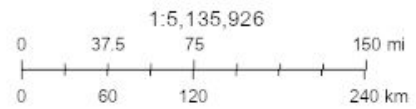


# Debris



## Debris

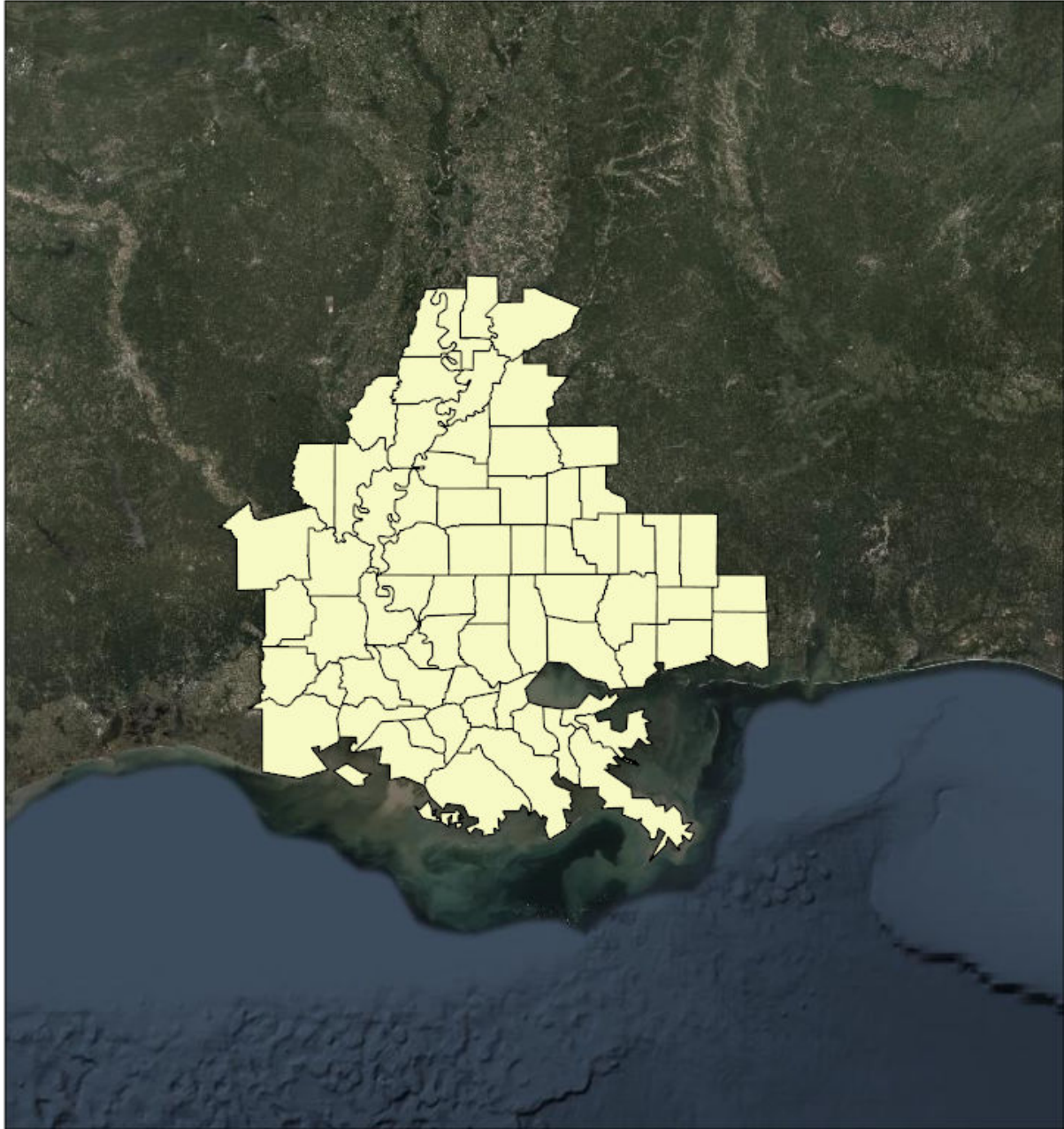
-  < 100,000 cubic yards
-  100,000 - 249,000 cubic yards
-  250,000 - 499,999 cubic yards
-  500,000 - 999,999 cubic yards



Source: Esri, DigitalGlobe, GeoEye, Earthstar Geographics, CNES/Airbus DS, USDA, USGS, AeroGRID, IGN, and the GIS User Community

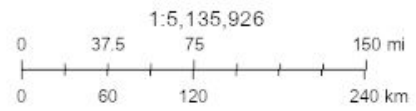
Created by SimSuite

# Est. Temp. Roofing



Est. Temp. Roofing

 < 2,000 units

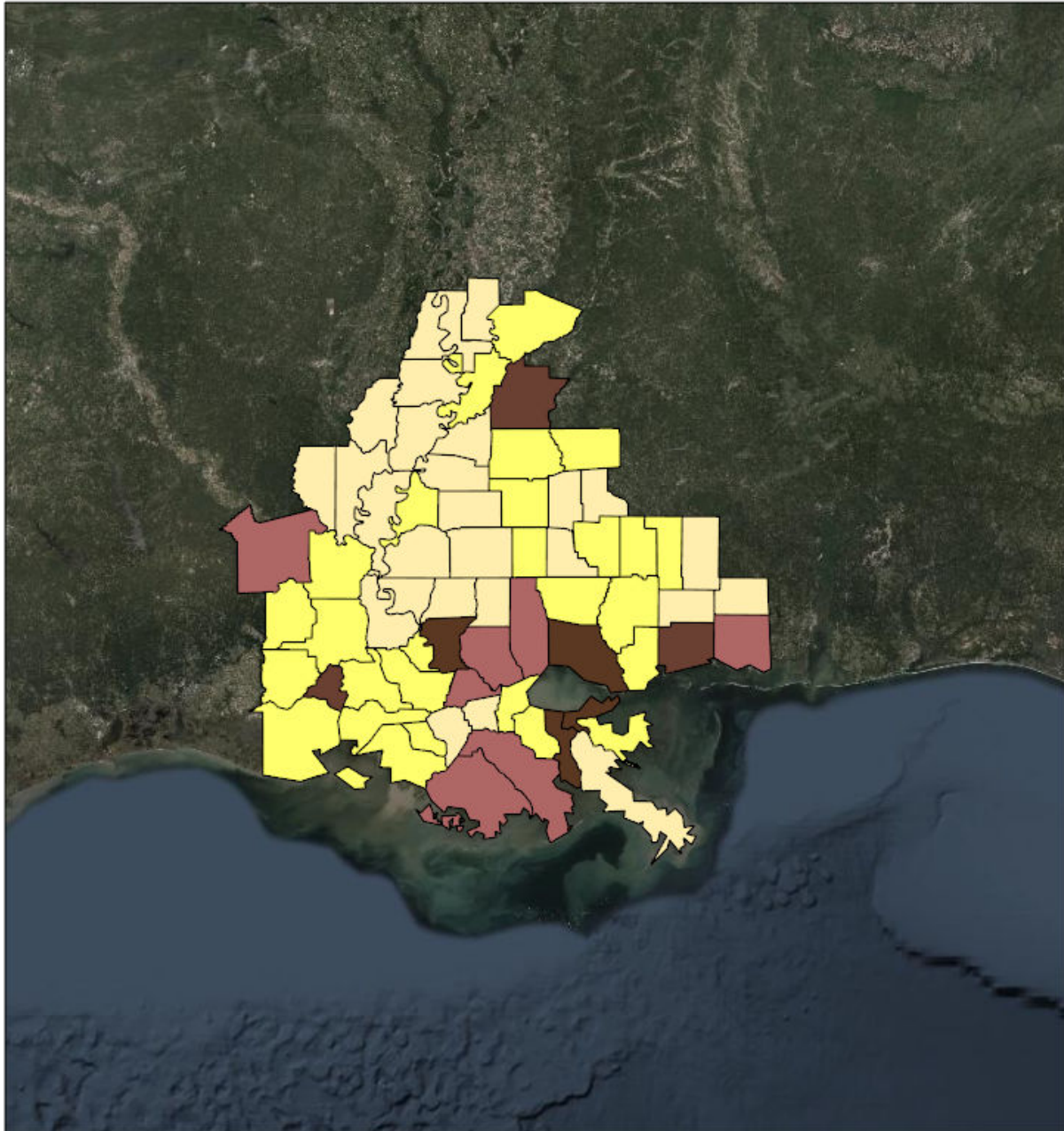


Source: Esri, DigitalGlobe, GeoEye, Earthstar Geographics, CNES/Airbus DS, USDA, USGS, AeroGRID, IGN, and the GIS User Community



Created by SimSuite

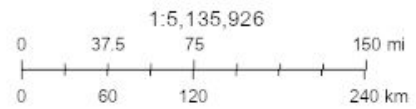


# Population



## Population

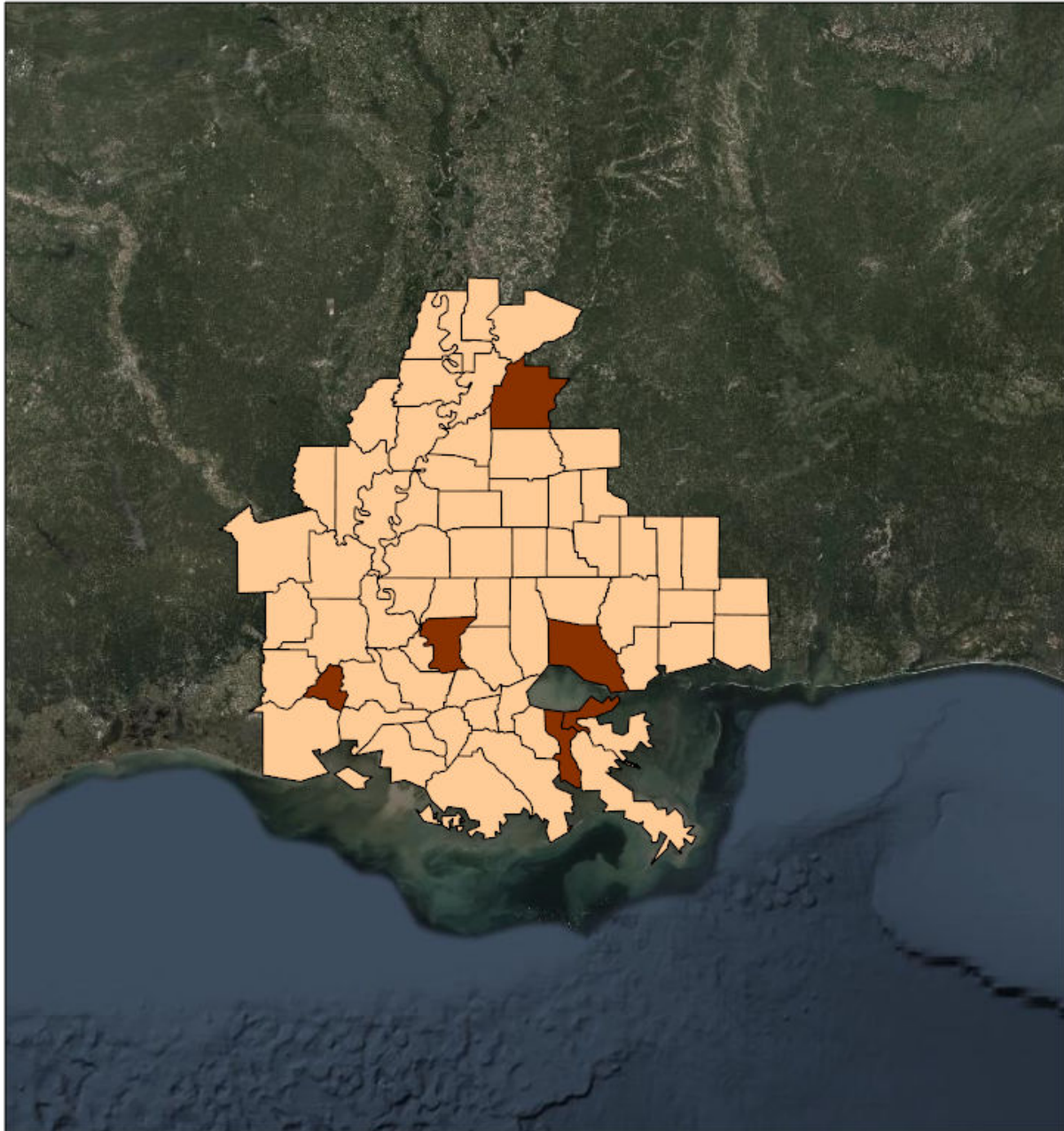
-  < 25,000 persons
-  25,000 - 99,000 persons
-  100,000 - 174,999 persons
-  175,000 - 249,000 persons



Source: Esri, DigitalGlobe, GeoEye, Earthstar Geographics, CNES/Airbus DS, USDA, USGS, AeroGRID, IGN, and the GIS User Community

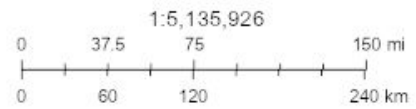
Created by SimSuite

# Households



## Households

- < 7,500 Households
- 15,000 - 24,999 Households
- 25,000 - 49,999 Households



Source: Esri, DigitalGlobe, GeoEye, Earthstar Geographics, CNES/Airbus DS, USDA, USGS, AeroGRID, IGN, and the GIS User Community

Created by SimSuite

## Mission Summary



The mission models account for storm surge and wind damage only, but do not account for other related storm hazards that may affect the mission estimates.

<b>Mission Summary</b>	
Total Counties	67
Debris (cu. yd.)	1,927,883
Est. Temp. Roofing (units)	2,352
Act. Temp. Roofing (units)	776
Population	4,746,758
Households	1,711,996
<b>Population Distribution</b>	
Tropical Storm	3,746,729
Category 1	507,564
Category 2	61,146

<b>LOUISIANA</b>	<b>Yds of Debris (1,927,883)</b>	<b>Est. Roof Units (2,352)</b>	<b>Act. Roof Units (776)</b>	<b>Population (3,500,109)</b>	<b>Households (1,252,741)</b>
Acadia	0	0	0	64,233	22,841
Ascension	191,595	261	86	124,274	37,790
Assumption	44,292	91	30	24,326	8,736
Avoyelles	0	0	0	43,493	15,432
Catahoula	0	0	0	10,384	3,834
Concordia	0	0	0	20,789	7,613
East Baton Rouge	302,326	620	205	455,183	172,057
East Carroll	0	0	0	7,690	2,552
East Feliciana	0	0	0	20,133	7,022
Evangeline	0	0	0	35,225	12,829
Franklin	0	0	0	21,409	7,904
Iberia	10,177	21	7	74,654	26,778
Iberville	28,252	58	19	34,675	11,072
Jefferson	14,126	29	10	436,044	169,647
La Salle	0	0	0	15,517	5,468
Lafayette	0	0	0	249,487	87,027
Lafourche	719,656	370	122	102,036	35,486
Livingston	0	0	0	142,761	46,007
Madison	0	0	0	11,737	4,025
Orleans	0	0	0	378,952	142,158
Plaquemines	0	0	0	24,106	8,077
Pointe Coupee	0	0	0	22,931	9,082
Rapides	0	0	0	138,904	50,401
St. Bernard	0	0	0	42,016	13,221
St. Charles	6,960	14	5	55,762	18,557
St. Helena	0	0	0	11,008	4,333
St. James	39,125	70	23	22,785	7,717
St. John the Baptist	11,367	23	8	46,127	15,965
St. Landry	0	0	0	85,834	31,857
St. Martin	0	0	0	55,795	19,216
St. Mary	30,116	62	20	54,463	20,457
St. Tammany	0	0	0	259,212	87,521
Tangipahoa	0	0	0	133,414	45,135
Tensas	0	0	0	5,076	2,172
Terrebonne	509,042	690	228	116,998	40,091
Vermilion	0	0	0	61,784	21,889
Washington	0	0	0	48,152	18,113
West Baton Rouge	20,849	43	14	26,881	8,688
West Feliciana	0	0	0	15,859	3,971

<b>MISSISSIPPI</b>	<b>Yds of Debris (0)</b>	<b>Est. Roof Units (0)</b>	<b>Act. Roof Units (0)</b>	<b>Population (1,246,649)</b>	<b>Households (459,255)</b>
Adams	0	0	0	31,160	12,643
Amite	0	0	0	12,545	5,351
Claiborne	0	0	0	9,331	3,440
Copiah	0	0	0	29,484	10,708
Forrest	0	0	0	75,662	28,746
Franklin	0	0	0	8,081	3,211
George	0	0	0	23,759	7,982
Hancock	0	0	0	48,810	17,380
Harrison	0	0	0	205,027	71,476
Hinds	0	0	0	243,165	91,351
Issaquena	0	0	0	1,325	472
Jackson	0	0	0	144,768	52,205
Jefferson	0	0	0	7,644	2,929
Jefferson Davis	0	0	0	11,776	4,977
Lamar	0	0	0	58,929	21,542
Lawrence	0	0	0	13,333	5,078
Lincoln	0	0	0	35,319	13,296
Marion	0	0	0	26,158	10,135
Pearl River	0	0	0	56,827	20,816
Perry	0	0	0	12,551	4,674
Pike	0	0	0	40,438	15,370
Sharkey	0	0	0	4,786	1,834
Simpson	0	0	0	27,769	10,330
Stone	0	0	0	18,163	6,165
Walthall	0	0	0	14,801	5,888
Warren	0	0	0	48,277	18,941
Wilkinson	0	0	0	9,239	3,455
Yazoo	0	0	0	27,522	8,860



## Critical Infrastructure

Summary			
Total Critical Facilities		1,261	
Power Requirements (kW)		46,943.6	
Range (kW)			
Communications	# FED Gen Req	Range (kW)	Req kW
AM Antennas (12)	0.6	35 - 75	33.0
Cellular Towers (61)	36.6	35 - 75	2,013.0
FM Antennas (32)	1.6	35 - 75	88.0
Education	# FED Gen Req	Range (kW)	Req kW
Private Schools (60)	0.0	200 - 300	0.0
Public Schools (233)	69.9	200 - 300	17,475.0
Colleges and Universities (39)	0.8	200 - 300	195.0
Emergency Services	# FED Gen Req	Range (kW)	Req kW
911 Call Centers (0)	0.0	15 - 35	0.0
Emergency Medical Service (125)	12.5	15 - 35	312.5
Fire Stations (177)	17.7	15 - 35	442.5
Service Providers (0)	0.0	0 - 0	0.0
Healthcare	# FED Gen Req	Range (kW)	Req kW
Nursing Homes (55)	8.3	35 - 100	556.9
Hospitals (35)	10.5	800 - 2000	14,700.0
Urgent Care Facilities (13)	2.6	200 - 300	650.0
Military	# FED Gen Req	Range (kW)	Req kW
Air National Guard (ANG) Sites (0)	0.0	15 - 35	0.0
Army National Guard (ARNG) Sites (8)	0.0	15 - 35	0.0
National Security Government Military Facilities (60)	0.0	15 - 35	0.0
Law Enforcement	# FED Gen Req	Range (kW)	Req kW
Prison Points (15)	3.0	400 - 600	1,500.0
Local Police (23)	2.3	15 - 35	57.5
State Police (4)	0.2	15 - 35	5.0
Correctional Facilities (0)	0.0	400 - 600	0.0
State and Local EOC	# FED Gen Req	Range (kW)	Req kW
Local Emergency Operations Centers (10)	2.0	15 - 40	55.0
State Emergency Operation Centers (EOCs) (1)	0.2	15 - 35	5.0

<b>State Facilities</b>	<b># FED Gen Req</b>	<b>Range (kW)</b>	<b>Req kW</b>
Governors Mansion (1)	0.0	100 - 200	0.0
Major State Government Building (24)	2.4	100 - 200	360.0

<b>Transportation</b>	<b># FED Gen Req</b>	<b>Range (kW)</b>	<b>Req kW</b>
Ports (152)	0.0	600 - 1200	0.0
Amtrak Stations (2)	0.0	100 - 300	0.0
Bus Stations (20)	0.0	100 - 300	0.0
Intermodal Terminal Facilities (6)	0.0	100 - 300	0.0
Railroad Stations (1)	0.0	100 - 300	0.0
Public-Use Airports (78)	9.4	40 - 100	655.2

<b>Water</b>	<b># FED Gen Req</b>	<b>Range (kW)</b>	<b>Req kW</b>
Water Treatment Facilities (0)	0.0	800 - 2000	0.0
Wastewater Treatment Plants (14)	5.6	800 - 2000	7,840.0

## COVID-19

#	County	Cases
1	Jefferson	64,561
2	East Baton Rouge	57,766
3	Orleans	42,857
4	St. Tammany	39,229
5	Lafayette	34,529
6	Harrison	28,104
7	Hinds	28,101
8	Livingston	22,070
9	Tangipahoa	20,767
10	Jackson	20,209
11	Ascension	19,762
12	Rapides	18,313
13	Terrebonne	17,393
14	Lafourche	16,137
15	St. Landry	12,258
16	Forrest	11,682
17	Iberia	11,040
18	Acadia	9,249
19	Lamar	9,181
20	Vermilion	8,712
21	St. Charles	8,207
22	St. Mary	7,702
23	St. Martin	7,560
24	Pearl River	7,218
25	Washington	6,877
26	St. Bernard	6,260
27	Washington	6,163
28	Washington	6,163
29	Hancock	6,160
30	Avoyelles	6,131
31	Warren	5,797
32	St. John the Baptist	5,723
33	Iberville	5,416
34	Evangeline	4,938
35	Pike	4,660
36	Lincoln	4,658
37	East Feliciana	4,212
38	West Baton Rouge	4,115
39	Adams	3,910

40	Yazoo	3,857
41	George	3,825
42	Simpson	3,775
43	Copiah	3,773
44	Franklin	3,651
45	Marion	3,545
46	Plaquemines	3,519
47	Pointe Coupee	3,498
48	Assumption	3,304
49	Stone	3,062
50	St. James	2,993
51	Concordia	2,769
52	LaSalle	2,290
53	Madison	1,869
54	Lawrence	1,809
55	Walthall	1,789
56	Amite	1,683
57	Perry	1,680
58	Catahoula	1,547
59	Jefferson Davis	1,483
60	West Feliciana	1,403
61	East Carroll	1,381
62	St. Helena	1,219
63	Claiborne	1,181
64	Franklin	1,009
65	Wilkinson	908
66	Jefferson	811
67	Sharkey	570
68	Tensas	429
69	Issaquena	184